

Dear customer!

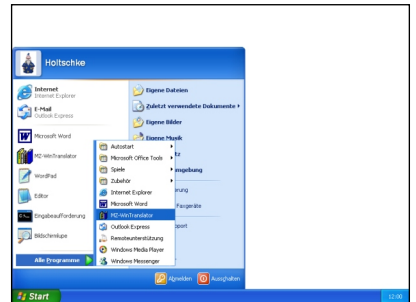
Thank you for buying our translation program.

1. Installation

1. Insert the program CD-ROM into the CD or DVD drive.
The Autorun program appears.
2. Click 'Quick Installation' if you want to install the program using the recommended default settings (destination directory 'C:\Programs\MZ-WinTranslator V19', copy English-German dictionaries on hard disk, install German and English speech output, install Office integration if possible).
If you want to change the installation options, click 'User-defined Installation'.
Do not use the Quick Installation if you purchased additional dictionaries!
3. Follow the instructions of the installation program.

2. Starting the program

1. Click 'Start'.
2. Point on 'Programs' or 'All Programs'.
3. Click 'MZ-WinTranslator V19'.



3. Entering the license data

When starting the program for the first time, please enter the licensee exactly as stated here. This includes commas, spaces, ZIP and town - take care of upper/lower cases. Example:

M a r t i n M u s t e r , 1 1 1 1 1 M u s t e r

For owners of a previous version

You may import your old settings by choosing 'Extras', 'Apply settings...' and clicking 'OK'. Afterwards, you may uninstall the old version.

**Please keep this document in a safe place.
The license data is required each time you install the program!**

More information is also available at: www.mz-translator.com